

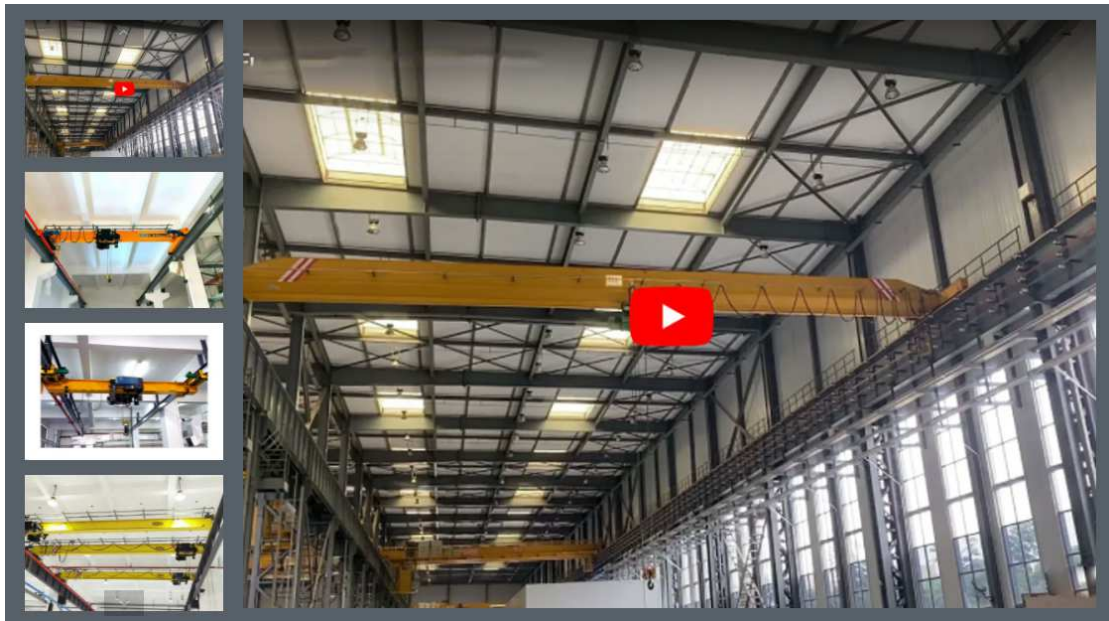


Henan Tosta Machinery Co., Ltd.

Overhead Crane

European Standard Overhead Crane

[European overhead crane](#) are designed according to international standards: FEM (Europe), DIN (Germany), ISO (International), and have many advantages such as strong rigidity, light weight, low power, and outstanding structural design. Compared with traditional cranes, European-style cranes have the smallest limit distance from the hook to the wall, the lowest clearance height, and can work closer to the front, with a higher lifting height, which actually increases the effective working space of the existing plant. Zhonggong [cranes factory](#) can provide you various cranes with satisfied service.



Advantages of European Standard Overhead Crane

- Low headroom and high reliability
- Take multiple measures to ensure the smooth operation of material handling
- Faster transportation
- Have more intelligent functions to help efficient production
- Support synchronous lifting and centralized control
- The electrical components are of good quality and durable

Specification of European Standard Overhead Crane

Lifting capacity(ton)	1-30
Working-class	A3-A5
Span(m)	7.5-31.5M
Working temperature	-25~40°C
Lifting speed (m/min)	8/0.8
Lifting height(m)	6、 9、 12、 18、 24、 30
Traveling speed(m/min)	20/30