

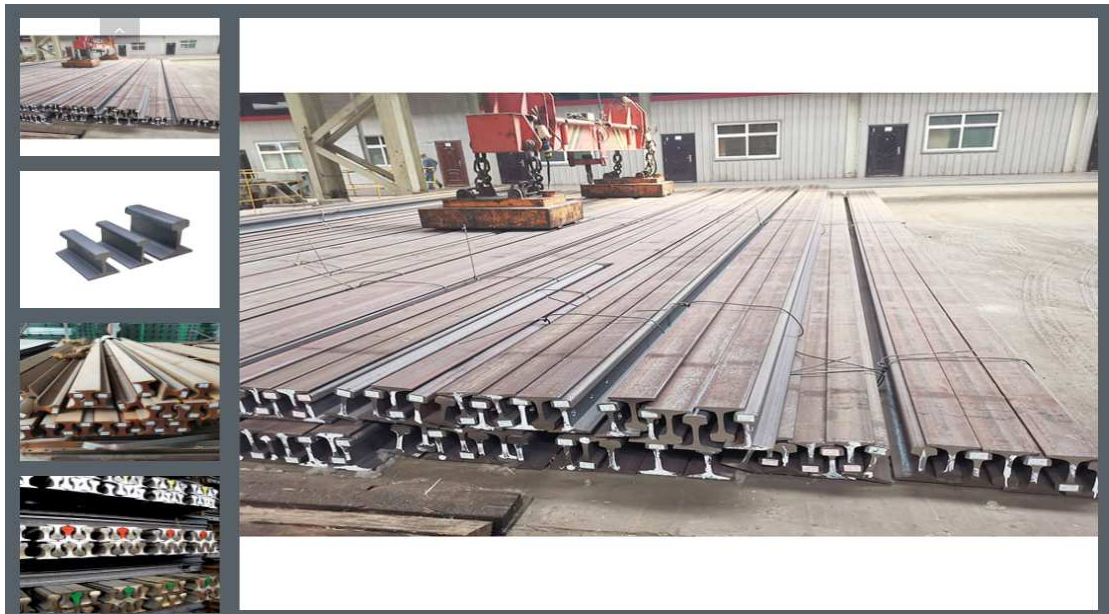


Henan Tosta Machinery Co., Ltd.

Crane Components

Crane Rails

[Crane rail](#) also can be called crane track, steel rail track, etc. It is a metal groove or ridge that holds, guides, and reduces friction for a moving device and a steel-striped line used for a running trolley. The theoretical weight of China's standard crane track increased from 52.8kg/m to 118.1kg/m. Zhonggong [cranes factory](#) can provide you various cranes with satisfied service.



Specification of Crane Rails

Crane rails provide a continuous, smooth, and low-resistance rolling surface for the crane wheels. It is employed to guide the wheels of the crane, bear the pressure of the wheel, and transmit it to the sleeper and ground.

Specification of Crane Rails

Web thickness: 22mm - 24mm

Length: 9/9.5/10/10.5/11/11.5/12/12.

Bottom width: 69.85-152.4mm

Head width: 25-120mm